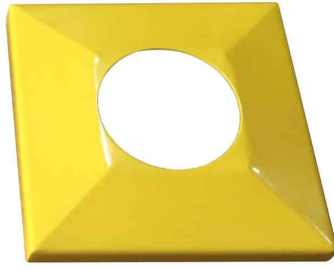




PROJECT		SUBMITTED BY	
DATE		SPEC SECTION	



Bolt Down Bollard Base Plate Cover - Safety Yellow

SKU: 4BDBCVRV

Highlighted Features

- ✓ Powder coated yellow steel finish
- ✓ For bolt-down bollards with 8" x 8" or 10" x 12" base plate
- ✓ Safety yellow



Scan for product page

SELECTABLE PRODUCT OPTIONS

Cover Size	8" x 8" / 10" x 12"
------------	---------------------

SPECIFICATIONS

Weight	5 lbs
Dimensions (L x W x H)	10 x 10 x 6 in

PRODUCT DESCRIPTION

For use with PostGuard Safety Yellow BDB-Series bollards

4" BDB Bollards use the 8"x8" cover

6" BDB Bollards use the 10"x12" cover